



Vernet

THERMOSTATIC
CARTRIDGE

CA43

A SINGLE TEMPERATURE REGULATION UNIT



VERNET

TECHNOLOGY INSIDE

The **CA43** cartridge range gives you the best temperature regulation and safety in accordance with various standards

- ✓ A high technology thermoplastic polymer
- ✓ Anti-scald function on each cartridge
- ✓ Recommended for all slim sanitary faucets
- ✓ Used in mixing valves for temperature limitation
- ✓ Includes a special Vernet thermostatic element
- ✓ Simplified design without compromise on efficiency
- ✓ Ensures the steadiest mixed outlet water temperature
- ✓ Offers long life product reliability

HEAVY DUTY CARTRIDGE

The **CA43** ensures a steady & precise outlet temperature under any hydraulic conditions

- ✓ A wide range of cartridges with various regulation standards and flow capacities for your different needs (shower, bath, central thermostat, high and low pressure, high flow, ...) with one single geometry
- ✓ Regulation range (15 to 60°C - 59 to 140°F) with maximum accuracy in the temperature range (34 to 42°C - 93.2 to 107.6°F)
- ✓ Specific temperature ranges are available upon request

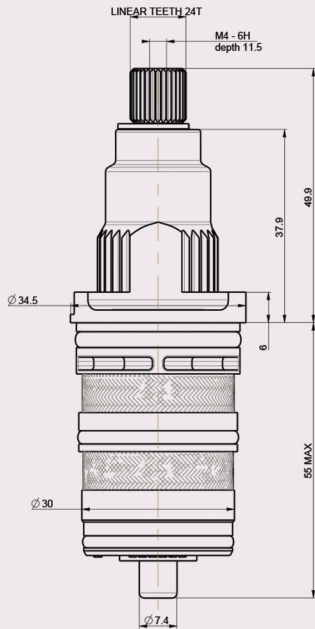
QUALITY

Each cartridge is **individually checked** for stability, flow, operating torque, leakage and anti-scald function

CERTIFICATIONS

The **CA43** range meets international standards :
NF EN 111 (NF077 certification),
ASSE1016, NHS D08

DIMENSIONS



SPECIFICATIONS

CA 43 type	soft seat	Suitable for Regulation standard	0.2 bar 2.9 psi	3 bar 43,5 psi	3 bar 43,5 psi	3,1 bar 45 psi
			NHS D08 LP	NF shower (A resistance)	NF bath (C resistance)	ASSE (free outlet)
			3/4" E5933	1/2" 6733	1/2" 6733	3/4" E5933
CA43-045	no	NF, ASSE	7.5 l/min (2 gpm)	12 l/min (3.2 gpm)	20 l/min (5.3 gpm)	38 l/min (10 gpm)
CA43-063	yes	D08, ASSE	9 l/min (2.4 gpm)	12.5 l/min (3.3 gpm)	21 l/min (5.5 gpm)	49.2 l/min (13 gpm)
CA43-064	no	ASSE	10 l/min (2.6 gpm)	13 l/min (3.4 gpm)	21.5 l/min (5.7 gpm)	57 l/min (15 gpm)
CA43-057	yes	D08, ASSE	10 l/min (2.6 gpm)	13 l/min (3.4 gpm)	21.5 l/min (5.7 gpm)	57 l/min (15 gpm)
CA 43-067	yes	None	14 l/min (3.7 gpm)	13.5 l/min (3.8 gpm)	22.5 l/min (5.9 gpm)	72 l/min (19 gpm)
CA43-062	no	None	18 l/min (4.8 gpm)	14 l/min (3.7 gpm)	23 l/min (6.1 gpm)	88 l/min (23 gpm)

NF : French standard NF EN 1111 (NF077 certification)

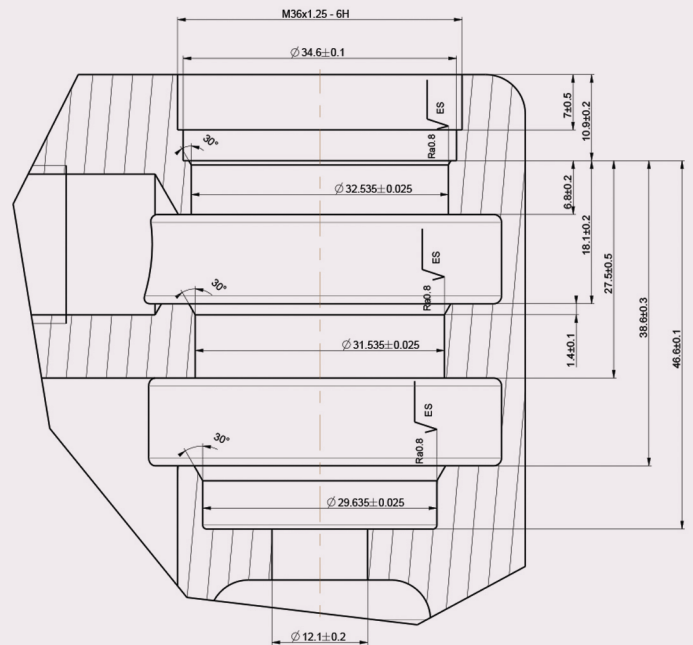
ASSE: American standard ASSE 1016

D08: British standard NHS D08

RECOMMENDATION

- ✓ **The** performance of the mixing valve does not only depend on the cartridge but also on the construction of the valve body and other devices.
- ✓ **Flow** rate measured in a Vernet valve body at mid-temperature.

CA43 HOUSING (in mm)



get in
TOUCH

